



# RA6-225 (6V225Ah)

RA6-225 is a general purpose battery with 10 years floating design life, meet with IEC, JIS .BS and Eurobat standard. With heavy duty grid, thickness plates, special additives, RA series battery have long and reliable standby service life. Our RA Series batteries keep high consistent for better performance in series usage.



## Specification

Cells Per Unit	3
Voltage Per Unit	6
Capacity	225Ah@10hr-rate to 1.75V per cell @25°C
Weight	Approx. 31.0 Kg
Max. Discharge Current	2250A (5 sec)
Internal Resistance	Approx. 4.0 mΩ
Operating Temperature Range	Discharge: -20°C~60°C Charge: 0°C~50°C Storage: -20°C~60°C
Normal Operating Temperature Range	25°C±5°C
Float charging Voltage	6.8 to 6.9 VDC/unit Average at 25°C
Recommended Maximum Charging Current Limit	67.5 A
Equalization and Cycle Service	7.3 to 7.4 VDC/unit Average at 25°C
Self Discharge	RITAR batteries can be stored for more than 6 months at 25°C. Self-discharge ratio less than 3% per month at 25°C. Please charge batteries before using.
Terminal	Terminal F16/F14
Container Material	A.B.S. (UL94-HB), Flammability resistance of UL94-V1 can be available upon request.



MH28539



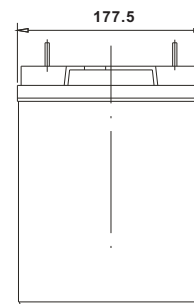
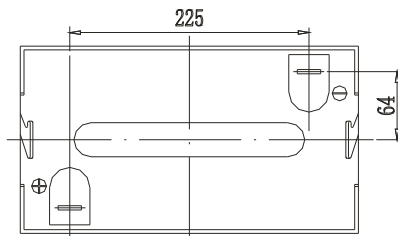
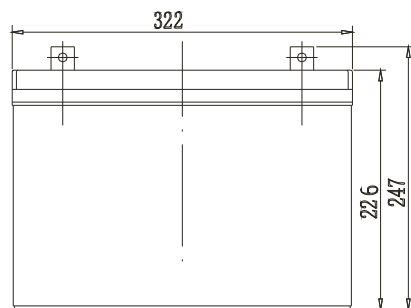
G4M20206-0910-E-16



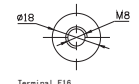
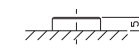
ISO9001:2000 Certificate

## Dimensions

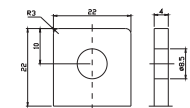
Unit: mm Dimension: 322(L)×177.5(W)×247(H)



Terminal F14



Terminal F16



## Constant Current Discharge Characteristics: A (25°C)

F.V/Time	5MIN	10MIN	15MIN	30MIN	1HR	2HR	3HR	4HR	5HR	8HR	10HR	20HR
4.80V	705.24	505.36	400.14	250.99	146.25	81.695	58.725	48.600	39.780	27.949	23.632	12.498
5.00V	686.39	480.85	391.93	246.84	145.58	81.081	58.500	48.375	39.546	27.722	23.404	12.270
5.10V	646.79	463.88	385.78	244.66	144.23	80.467	58.050	48.150	39.312	27.495	23.177	12.043
5.25V	580.79	428.05	367.31	238.55	142.88	79.853	57.825	47.700	38.844	27.267	22.950	11.816
5.40V	540.43	390.34	338.58	228.07	139.50	78.419	56.250	46.575	38.142	26.813	22.723	11.589
5.55V	470.45	348.85	303.70	213.67	132.53	74.939	53.775	44.325	36.504	25.677	22.041	10.907

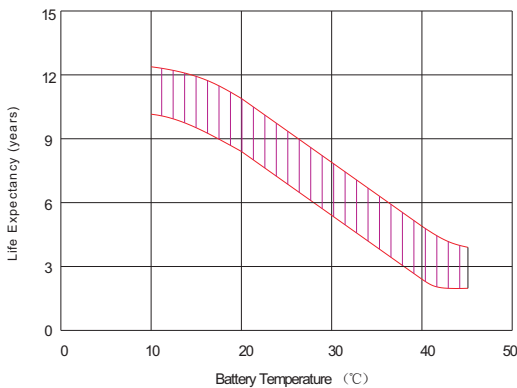
## Constant Power Discharge Characteristics: W(25°C)

F.V/Time	5MIN	10MIN	15MIN	30MIN	1HR	2HR	3HR	4HR	5HR	8HR	10HR	20HR
4.80V	3358	2532	2110	1387	836.3	469.9	338.9	280.8	230.3	162.2	132.9	70.18
5.00V	3290	2418	2066	1370	832.3	468.1	338.2	280.1	228.9	161.5	131.5	69.50
5.10V	3105	2338	2038	1354	826.2	463.8	336.2	278.8	228.2	160.1	130.8	68.82
5.25V	2796	2160	1943	1323	818.1	459.5	334.1	276.8	226.0	158.8	129.5	68.13
5.40V	2593	1961	1785	1263	797.9	452.7	326.0	269.3	222.5	155.3	128.1	67.45
5.55V	2238	1742	1594	1183	756.0	431.8	309.8	256.5	211.3	149.9	124.0	64.73

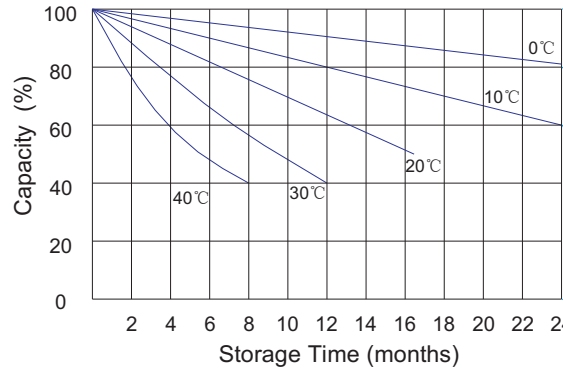
All mentioned values are average values.



### Effect of temperature on long term float life



### Storage characteristic



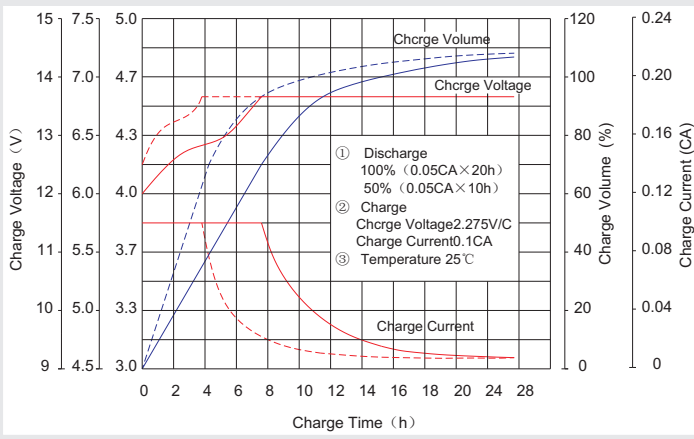
Supplementary charge required (Carry out supplementary charge before use if 100% capacity is required)

Supplementary charge required before use. This supplementary charge will help to recover the capacity and should be made as early as possible.

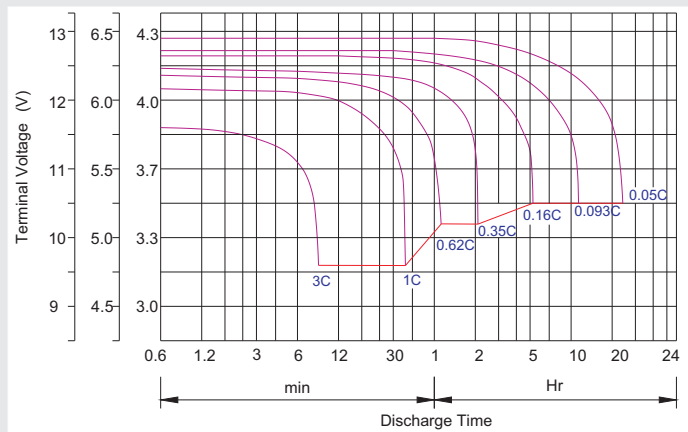
Supplementary charge may often fail to recover the capacity. The battery should never be left standing till this state is reached

Supplementary charge and storage guidelines

### Charge characteristic Curve for standby use



### Discharge characteristic Curve



### Capacity Factors With Different Temperature

Battery Type		-20°C	-10°C	0°C	5°C	10°C	20°C	25°C	30°C	40°C	45°C
GEL Battery	6V&12V	50%	70%	83%	85%	90%	98%	100%	102%	104%	105%
	2V	60%	75%	85%	88%	92%	99%	100%	103%	105%	106%
AGM Battery	6V&12V	46%	66%	76%	83%	90%	98%	100%	103%	107%	109%
	2V	55%	70%	80%	85%	92%	99%	100%	104%	108%	110%

### Discharge Current VS. Discharge Voltage

Final Discharge Voltage V/cell	1.75V	1.70V	1.60V
Discharge Current (A)	(A) ≤ 0.2C	0.2C < (A) < 1.0C	(A) ≥ 1.0C

**Charge the batteries at least once every six months, if they are stored at 25°C.**

Charging Method:

Constant Voltage	-0.2Cx2h+2.4-2.45V/cellx24h, Max. Current 0.3CA
Constant Current	-0.2Cx2h+0.1CAx12h
Fast	-0.2Cx2h+0.3CAx4.0h

### Maintenance & Cautions

#### Float Service:

- ※ Every month, recommend inspection every battery voltage.
- ※ Every three months, recommend equalization charge for one time.

Equalization charge method:

Discharge: 100% rate capacity discharge.

Charge: Max. current 0.3CA, constant voltage 2.4-2.45V/Cell charge 24h.

- ※ Effect of temperature on float charge voltage: -3mV/°C/Cell.

- ※ Length of service life will be directly affected by the number of discharge cycles, depth of discharge, ambient temperature and charging voltage.