

Tin Roof Mounting Bracket Installation Manual

AMR1W

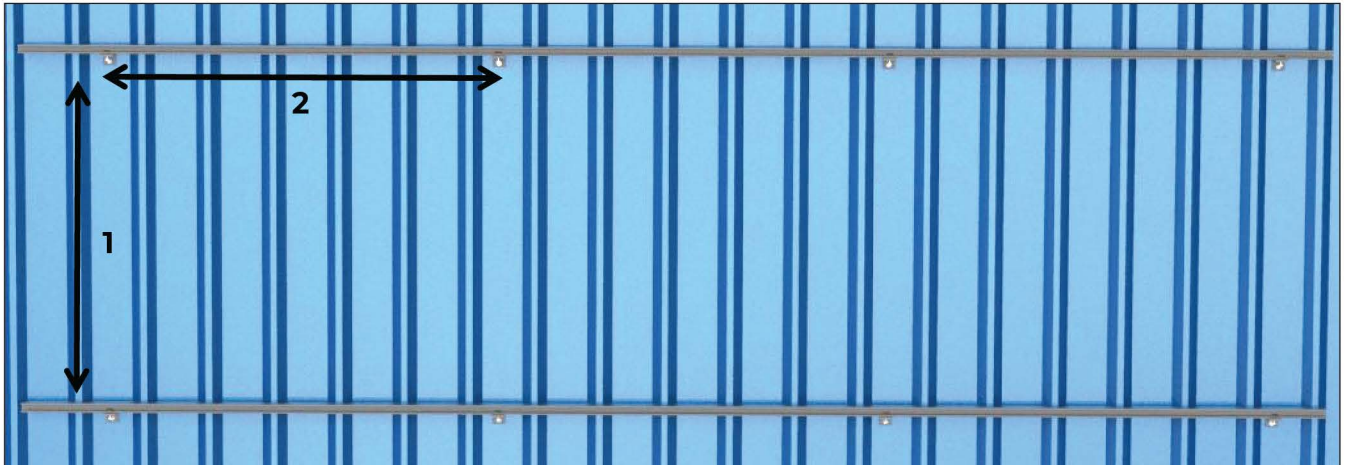


Components List

Model Name	L-Brackets	Screw M8*25, Washer, Nut	Rail	Splice
Image	 TP-L	 TP-S8/25	 TP-R01	 TP-R01RS
Model Name	End Clamp	Mid Clamp	Eathing Lug Assembly	Rail Cap
Image	 TP-EC-AA	 TP-IC-C	 TP-EL-AL	

Installation Steps

Determine the position of the L roof clamps according to your design.

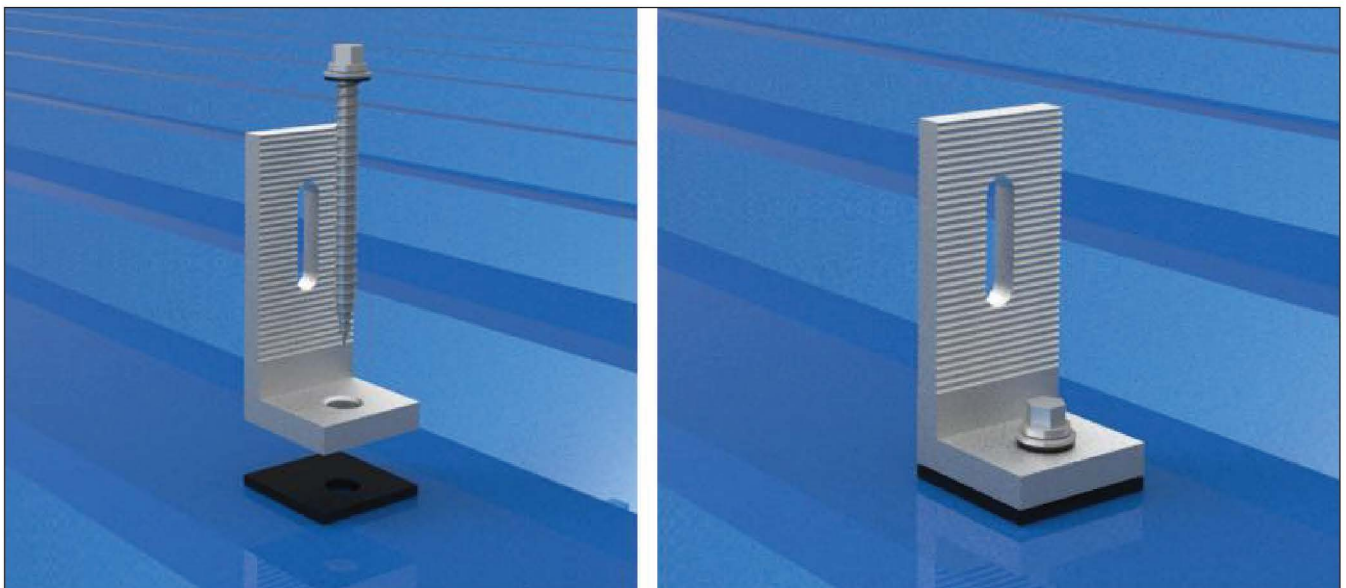


L1: Distance between rails is $0.6 \times \text{panel length}$.

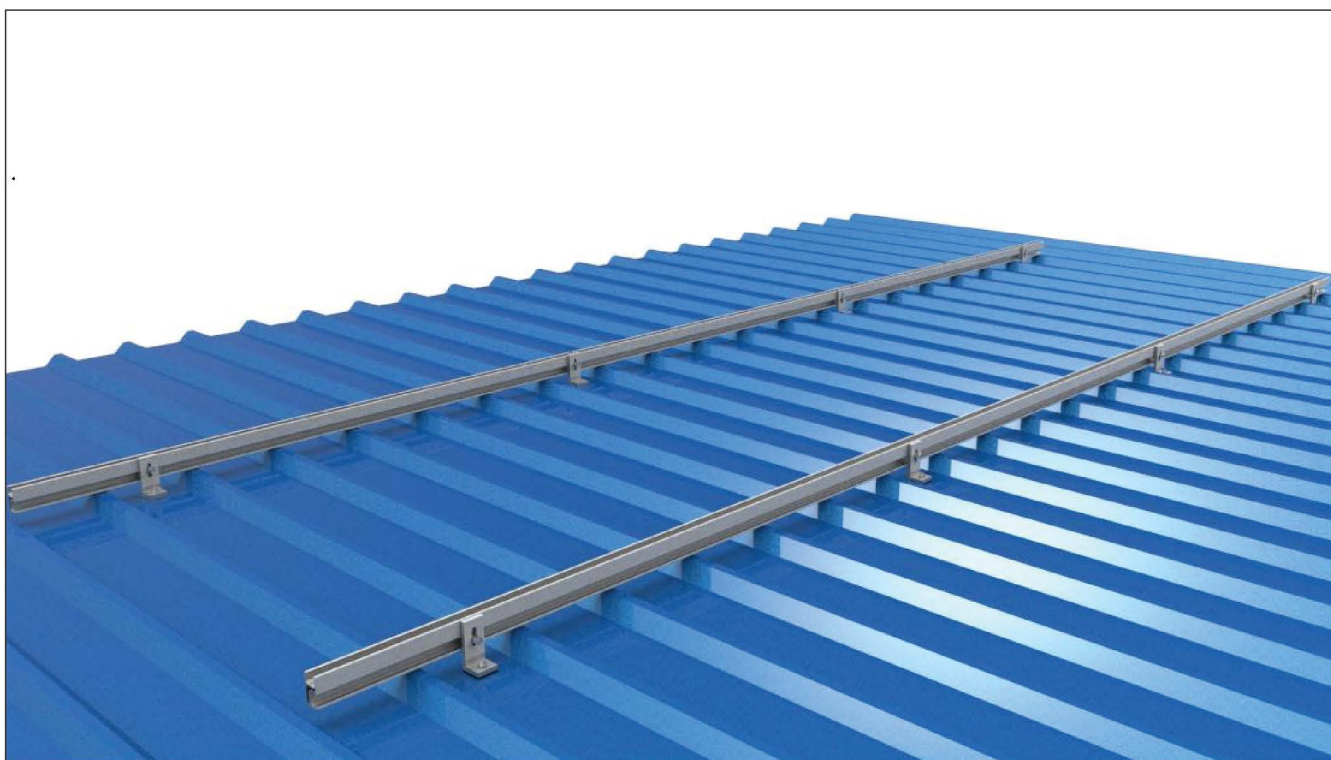
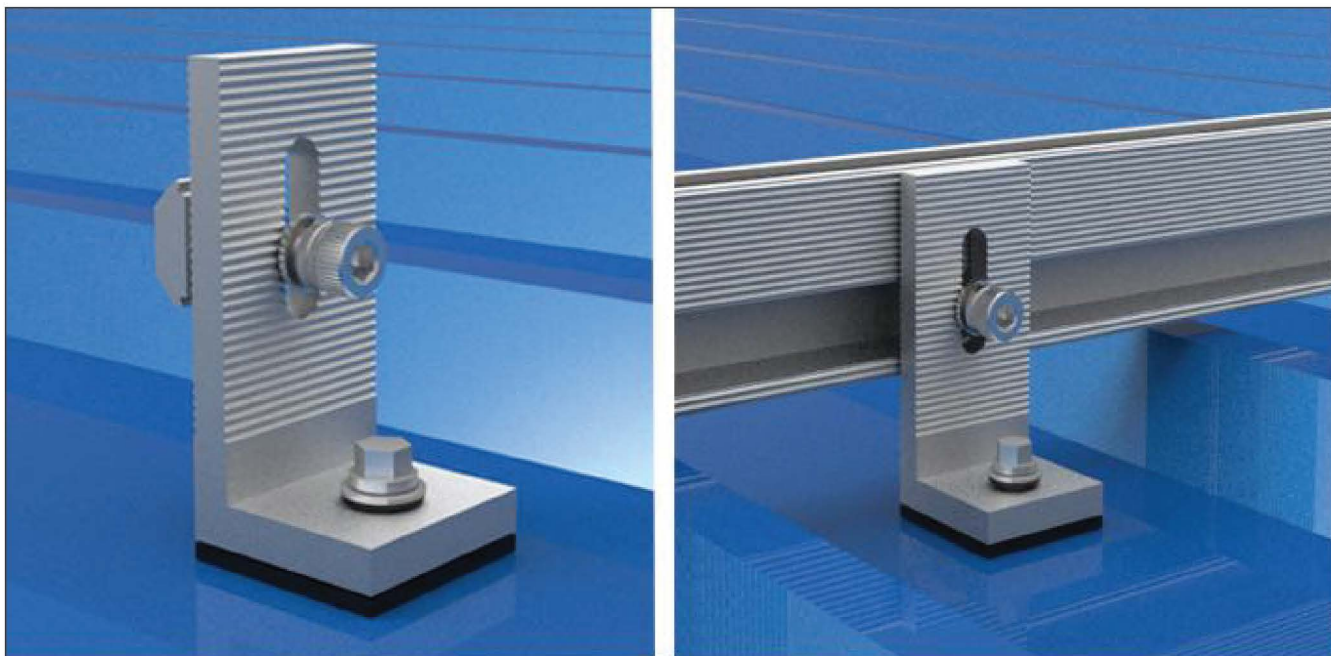
L2: Distance between roof clamps = 1200mm.

1. Install the roof clamp to the metal roof.

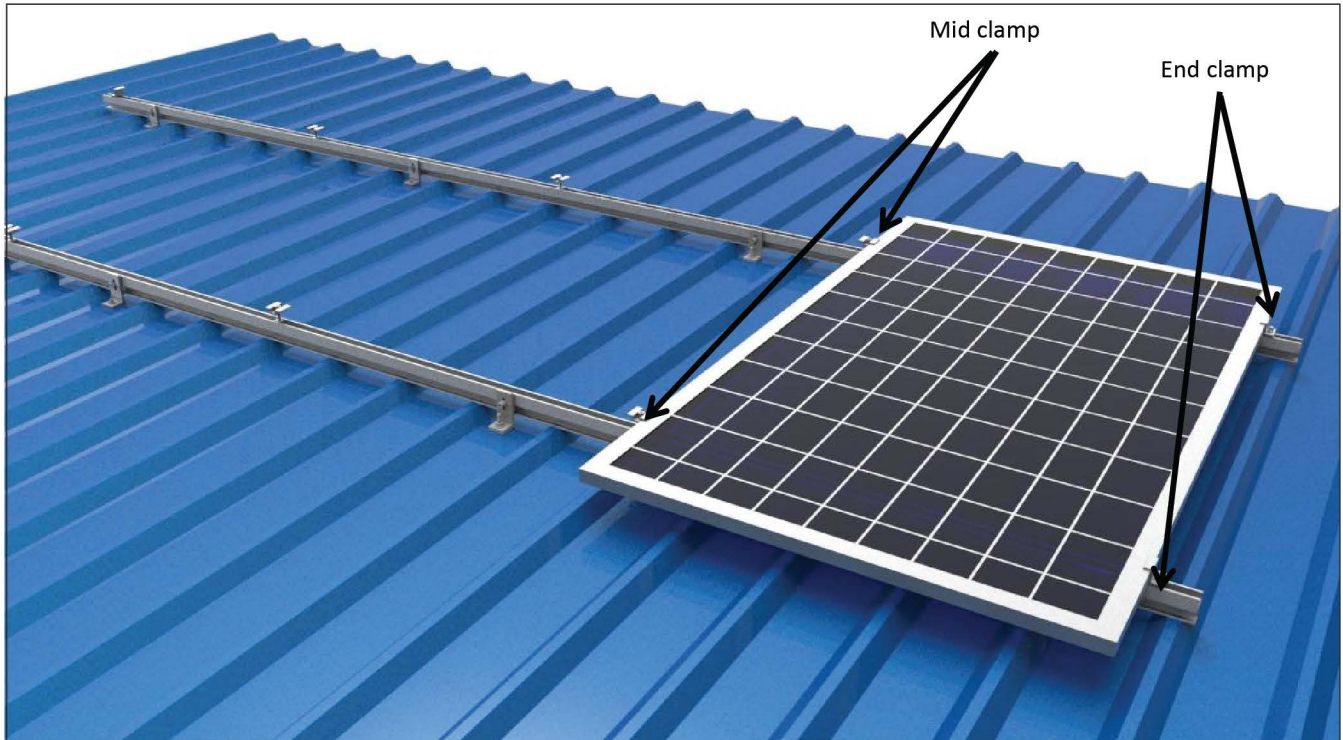
Fix the roof clamps with tapping screws and waterproof rubber.



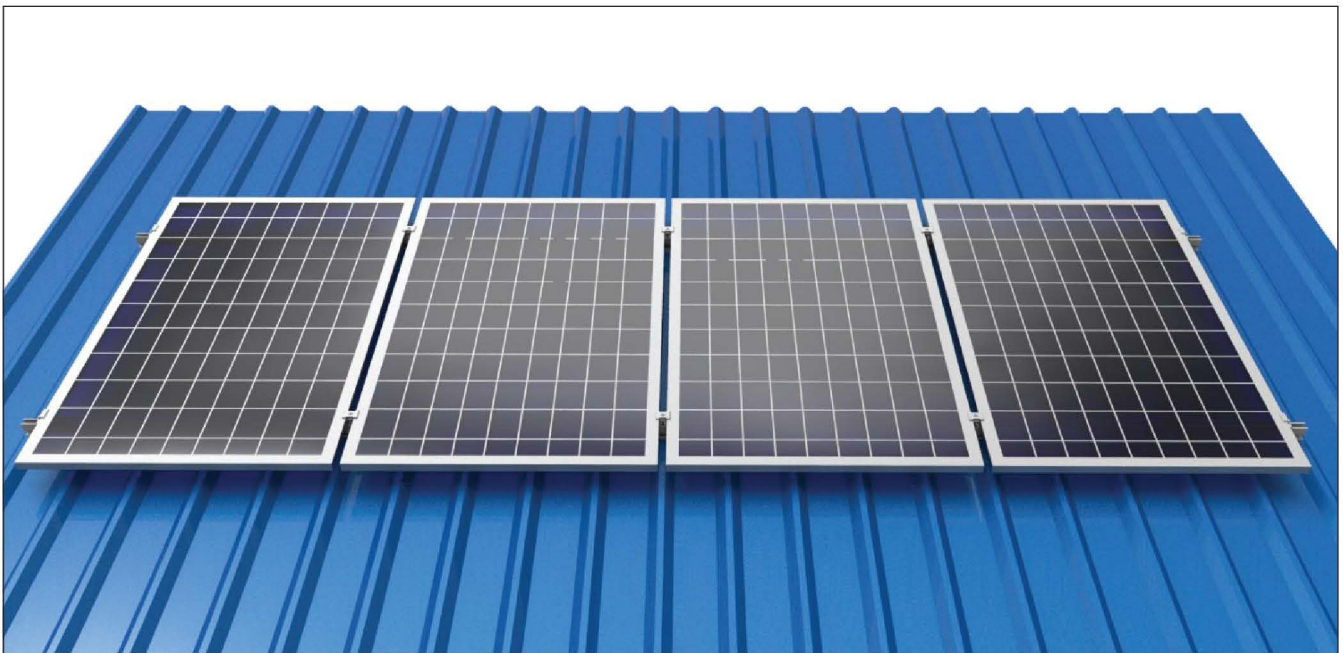
2. Install the rail on the L roof clamp with screw and clamp.



3. Place the first solar panel on the bottom row. Slide the end clamp tightly against the solar panel and fasten it. Fix the solar panel by the end clamp and mid clamp.



4. Finished.



Please Note

Installing two rails with the rail splice kit.

The connection is finished. An expansion gap at the rail joints is suggested. Leave a little gap between the two rails.



Installation of Nut

