

DEL-LFP12V200BT



General Features

ELiVATE Lithium batteries stand out as the pinnacle of cutting-edge energy storage solutions, offering unparalleled advantages making them the best choice for a multitude of applications.

Benefits

- **Lithium ion phosphate** (LiFePO4) chemistry, renowned for its inherent stability and resistance to thermal events.
- **Exceptional lifespan** enabling an increased number of charge/discharge cycles without significant degradation.
- **High energy density** to pack more power, ensuring extended runtime for various devices and applications.
- **Around 50% lighter** than the lead-acid replacement.
- **Rapid charging** capabilities make them ideal for fast-paced lifestyles and reduced downtime.
- **Environmentally friendly** chemistry aligns with sustainable values, making them the ethical choice.
- **Low self discharge** rate ensures consistent performance over extended periods of storage.
- **Internal Battery Management System** to ensure the cells remain protected and balanced.
- **Bluetooth enabled** to allow all the information you need at your fingertips.
- **Certified** and tested to international standards UN38.3, UL1642 + more.



**MORE
CYCLES**



**LONGER
LIFE**



**FASTER
CHARGING**



**INTERNAL
BMS**



**LIGHT-
WEIGHT**



**BLUE-
TOOTH**

Applications

- Caravan
- Boating
- 4WD and leisure
- Solar
- Backup power
- Electric vehicles

Electrical Specifications

Nominal Voltage 12.8V

Nominal Capacity 200Ah (C5)

Nominal Energy 2560Wh

Internal Impedance $\leq 25m\Omega$

Series / Parallel Modules - 4S & 4P

Mechanical Specifications

Dimensions (L x W x H) $\pm 3mm$ 483mm x 170mm x 235mm

Weight 21.8kg

Terminal Type M8 threaded hole

Case Material ABS

Cell Type/Chemistry Cylindrical - LiFePO4

Charge Specifications

Recommended Charge Voltage $14.4 \pm 0.15V$

Charge Algorithm LiFePO4 Lithium

Recommended Charge Current $\leq 100A$

Discharge Specifications

Normal Current $\leq 100A$

Maximum Continuous Discharge Current 120A ($\leq 20min$)

Standard Cutoff Voltage 10V

Temperature Specifications

Charge Temperature 0C - 45C

Discharge Temperature -20C - 60C

Storage Temperature 0C - 40C

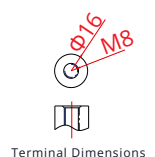
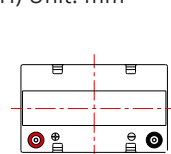
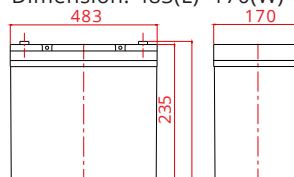
Optimal Storage Temperature 15C - 25C

Bluetooth Specifications

iPhone App Store

Android Google Play Store

Dimension: 483(L)×170(W)×235(H) Unit: mm

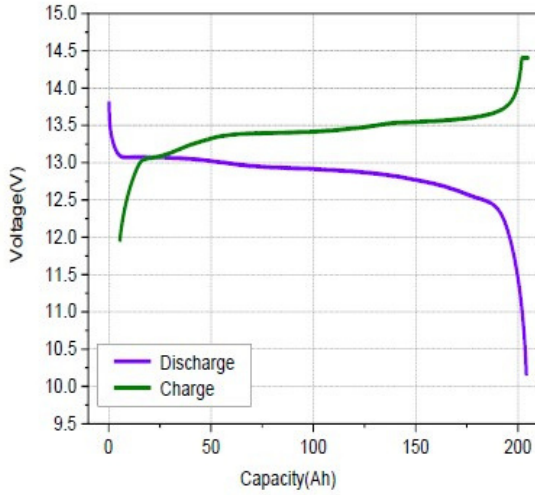


Terminal Dimensions

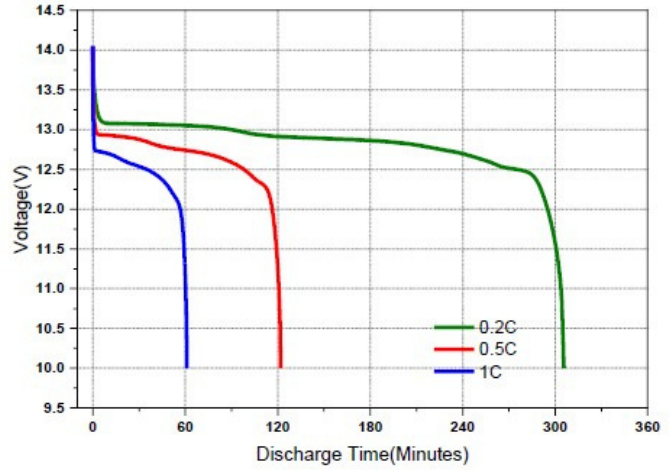
For warranty terms & conditions, visit www.deltecbatteries.com.au

1.2 Characteristics Curve

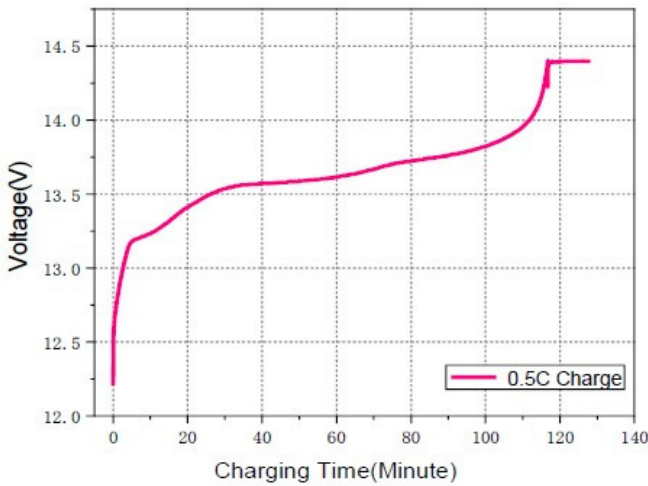
Charge-Discharge Curve 0.2C, 25°C



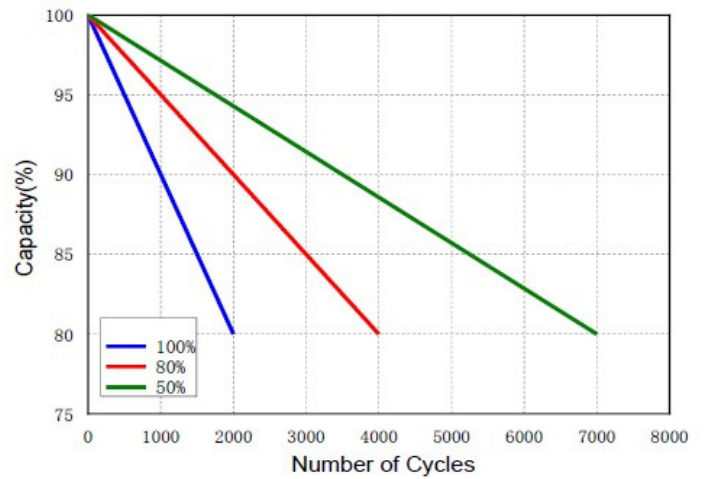
Different Rate Discharge Time & Voltage Curve, 25°C



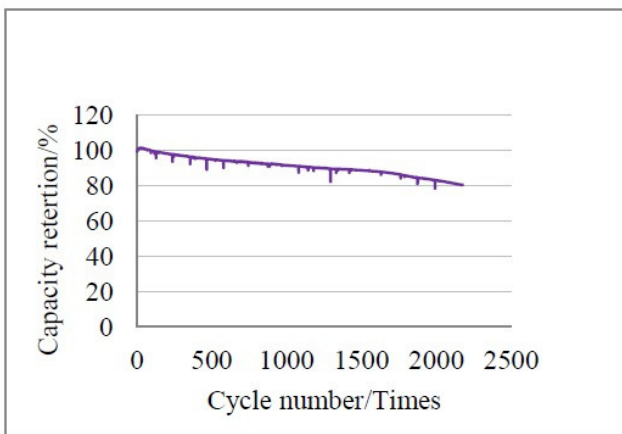
Voltage & Charging Time Curve, 0.5C, 25°C



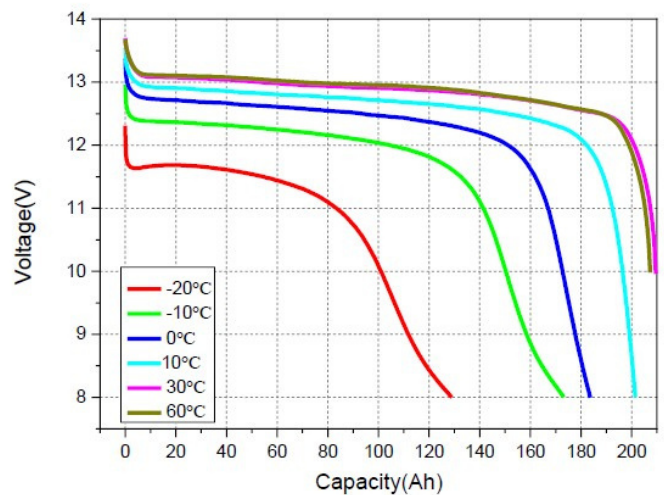
Different DOD Discharge Cycle Life Curve



Cycles & Capacity Retention Rate, 0.2C



Discharge Curves at Different Temperature



For warranty terms & conditions, visit www.deltecbatteries.com.au