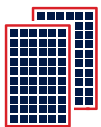


# Game Changing Inverters



## Built to last



Exceptional reliability, backed by long-term standard inverter warranty of 12 years, extendable to 25 years

## Know more



Track your solar performance with the mySolarEdge app, from anywhere and at any time

## More energy



Maximised energy output from each solar panel, and power losses from shading, leaves, soiling, etc. are limited

## Safety first



Industry-leading safety features offering maximum protection of people and property for your peace of mind

## Design flexibility



Fits nearly any roof with no restrictions on tilt, orientation, partial shade or panel type

## Complete PV solution



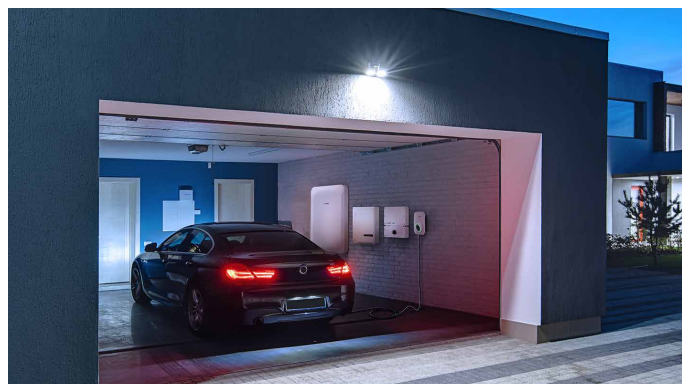
One ecosystem with a full, future-proofed system offering, backed up by reliable warranty and service, all from SolarEdge

**solar**edge

# / Which Inverter is Right for Me?



**HD-Wave Genesis** is designed to be a great entry-level product that incorporates the core functionality of SolarEdge technology and the ability to connect directly to a SolarEdge battery.



**Energy Hub** is designed to meet every home energy need. It does it all, including battery connection, energy backup, EV charging, full system monitoring and integrates with smart energy devices. It also offers panel-by-panel monitoring.

Benefits	HD-Wave Genesis	Energy Hub
Full panel optimisation	✓	✓
Single string design – inverters up to 5kW	✓	✓
Advanced safety features	✓	✓
12-year product warranty (extendable to 20 or 25 years)	✓	✓
Wi-Fi communications	✓	✓
Panel-level monitoring	*	✓
<b>Smart Energy Capabilities (expected availability Q4 2021)</b>		
SolarEdge Battery connection	✓	✓
Backup power support		✓
Smart energy device connection		✓
Smart EV charging		✓

## / mySolarEdge Monitoring App

Track your system production and household energy consumption and compare today's production to past measurements.

With the Energy Hub, users enjoy panel-level monitoring as well as the ability to control smart home devices on-the-go.

While Genesis users cannot see panel-level production data, if there is an issue, your installer will be automatically notified if there are any issues with your solar system requiring their attention. So you can relax in the knowledge that someone is keeping a close eye on your solar panel performance.



\* Upgrade Pathway expected to be available from Q3 2021