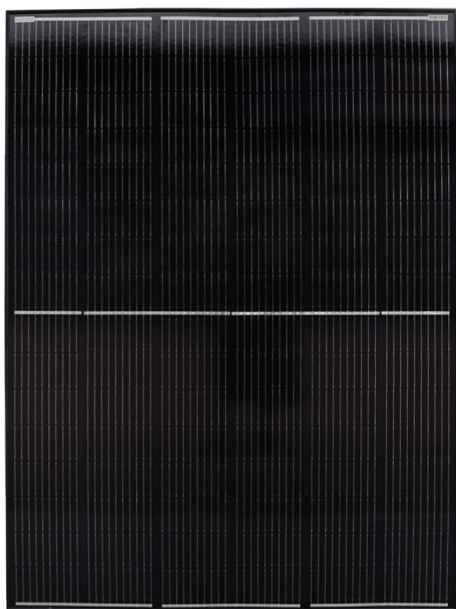


Alvolta Eclipse 20V 350W Solar Panel - ALV-350SP



The Alvolta Eclipse Range

Designed to impress, the Alvolta Eclipse range has more power, better value, and unmatched style.

A perfect solution for your ELV setup, Alvolta Eclipse rigid solar panels are engineered using high-quality, A-grade monocrystalline cells to guarantee peak performance.

Selecting the right solar panel is critical.

The bedrock lies in cell quality, unwavering durability, and peak efficiency ratings - pivotal factors guaranteeing seamless operation across seasons, ever-shifting weather conditions, appliance runtime, and your battery's overall capacity.

Resilience is paramount.

Oversizing your array is the key to uncompromised power supply. Enter the Alvolta Eclipse range: an assurance of peak performance and unrivalled flexibility in array design. With an extensive range of panel sizes and outputs, your power is limitless with Alvolta.

The Alvolta Eclipse range offers modules ranging from 20W - 350W.

Suitable for:



Panel Electrical Properties	
Cell Type	Monocrystalline
Related Power (W)	350
Maximum Power Voltage (V)	28.3
Open Circuit Voltage (V)	33.1
Maximum Power Current (A)	12.37
Maximum System Voltage (V)	1000
Short Circuit Current (A)	12.99
Efficiency Rating	20.6%
Dimensions (mm)	1560 x 1134 x 40
Power Tolerance	±3%
Weight (kg)	16.1

Features & Benefits

- Aesthetic black frame and cells
- IP65 sealed, weatherproof, multi-functional junction box to offer a high level of safety
- A sturdy, anodized aluminum frame allows modules to be easily roof mounted with a variety of standard mounting systems
- Up to 20.6% module efficiency
- Low voltage-temperature coefficient enhances high-temperature operation
- Designed to plug into DC-DC charger solar input
- Pre-wired 900mm cable with MC4 style connectors
- Suits all battery types (including lithium) and is fully programmable via the solar regulator

5 YEAR
PANEL
WARRANTY

