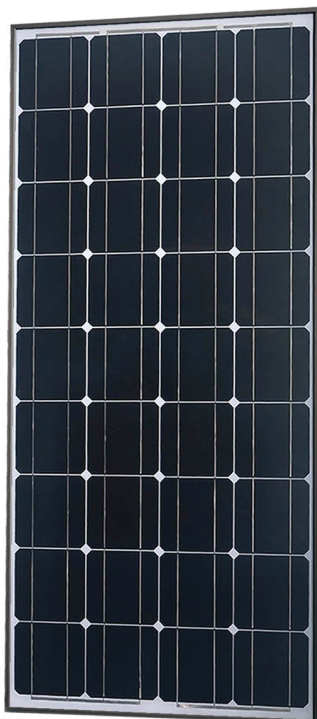


MONOCRYSTALLINE SOLAR MODULES

ALVOLTA



- IP65 WEATHER-RESISTANT JUNCTION BOX
- LOW IRON, HIGH TRANSMISSION GLASS IS USED FOR STRENGTH AND HIGH POWER OUTPUT
- FRAMED WITH A STRONG, ROBUST AND CORROSION-RESISTANT ALUMINIUM FRAME WITH MULTIPLE MOUNTING HOLES FOR EASY INSTALLATION

MODEL	SGM-100W
CELLS	SOLARWORLD
RATED POWER (WATTS)	100
OPEN CIRCUIT VOLTAGE (VOLTS)	21.6
MAXIMUM POWER VOLTAGE (VOLTS)	17.8
SHORT CIRCUIT CURRENT (AMPS)	6.07
MAXIMUM POWER CURRENT (AMPS)	5.62
POWER (MAX.)	100
TEMP RANGE	-40 TO +85°C
MAXIMUM SYSTEM VOLTAGE (VOLTS)	1000 VDC
POWER TOLERANCE	+/- 3%
NOMINAL DC VOLTAGE	12
SIZE (MM)	1200 x 540 x 35
WEIGHT	9.0 KG
WARRANTY	80 % 25 YEAR PERFORMANCE 5 YEAR PRODUCT WARRANTY

ALVOLTA

WWW.ALVOLTA.COM.AU