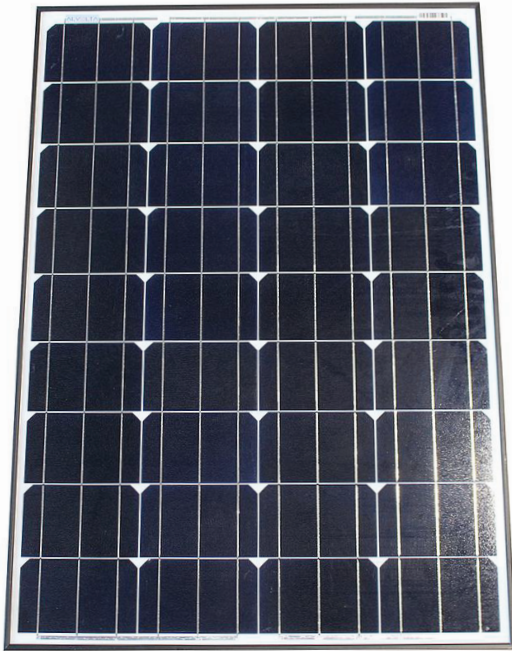


SCB12110W

High Efficiency Mono Solar Modules

ALVOLTA



Specifications	
Model	SCB12110W
Cells	SolarWorld
Cell Type	Monocrystalline
Rated Power (Watts)	110
Open Circuit Voltage (Volts)	23.4
Maximum Power Voltage (Volts)	19.8
Short Circuit Current (Amps)	5.94
Maximum Power Current (Amps)	5.5
Power (Max.)	110
Temp Range	-40 to +85°C
Maximum System Voltage (Volts)	1000 VDC
Power Tolerance	±3%
Nominal DC Voltage	12
Size (mm)	945 x 670 x 30
Weight	9.0 kg
Warranty	80% 25 Year Performance 5 Year product Warranty

ALVOLTA

WWW.ALVOLTA.COM.AU

Alvolta rigid solar panels are made using high quality monocrystalline, SolarWorld cells. Alvolta provide a full range of rigid monocrystalline solar panel modules ranging from 10W - 180W. They are designed for charging 12V batteries, for example in vehicles and boats, motor homes, caravans, camping, marine or any other systems with a 12V battery or battery bank.

Solar panels can be utilized to extend battery run time when powering multiple accessories. A number of factors that can influence this include: the time of year, weather conditions, battery capacity and how long you run your appliances. It's important to oversize your solar array (where space allows) so that on a good day your solar panels will be able to fully charge your batteries and keep your loads running whilst free camping.

Features:

- Aesthetic black frame
- IP65 sealed, weatherproof, multi-functional junction box gives high level of safety
- A sturdy, anodized aluminium frame allows modules to be easily roof mounted with a variety of standard mounting systems
- German SolarWorld cells
- Framed with a strong, robust and corrosion resistant aluminium frame
- Up to 20.04% module efficiency
- Low voltage-temperature coefficient enhances high-temperature operation
- 25 Year 80% warranty on power output and performance
- 5 Year product warranty on materials
- Pre wired 900mm cable with MC4 style connectors