

Discover[®] DRY CELL

Deep Cycle AGM Battery

MARINE/RV

INDOORS ■ OUTBACK ■ OFFSHORE ■ ON DUTY



SOLID PERFORMANCE

- Absorbed Glass Mat (AGM) deep cycle battery technology
- Heavy duty deep cycle performance with reliable power for engine starting
- Superior deep cycle capacity for longer run times under demanding loads and house power requirements
- Superior protection against vibration versus other battery technology
- Constructed to meet or exceed Original Equipment battery runtime and service life specifications
- Faster charging times than conventional batteries

SAFE & EASY INSTALLATION

- Multiple terminal options and flush cover designs for easy installation
- Leak and spill proof – safe for use in environmentally sensitive areas and with electronics
- No off gassing. Provides safe and corrosion free operation with 99.9% efficient gas recombination valves



Maintenance-free Technology:

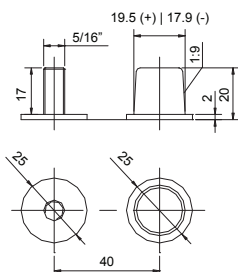
- Maintenance-free. No topping up required
- High charge retention. Self discharge rate of less than 2-3% per month (25°C)
- Eliminates corrosion due to off-gassing

TYPE NO.	CAPACITY	MINUTES OF DISCHARGE		CA	CCA	LENGTH	WIDTH	HEIGHT	WEIGHT	TERMINAL
	20 HR	@ 25A	@ 75A			MM	MM	MM	KG	
6 VOLT MARINE/RV DRY CELL BATTERY										
DCMGC6	230	490	115	950	750	260	180	274	31	AM
DCMGT6	260	600	160	1050	825	260	180	282	36	M8
DCM305	350	740	205	1550	1250	295	180	365	48	AM
DCML16	400	880	244	1625	1300	295	180	385	55	M8
12 VOLT MARINE/RV DRY CELL BATTERY										
DCMU1	35	52	11	250	220	195	130	180	11	M6
DCM24	85	160	35	750	600	258	172	235	25	AM
DCM27	105	200	46	850	700	308	172	232	30	AM
DCM31	120	240	58	1000	800	330	172	236	33	AM
DCM31T	150	300	74	1150	900	327	180	274	40	AM
DCM185	235	505	125	1500	1200	386	178	372	63	AM
DCM4D	240	515	130	1500	1200	524	225	242	63	AT
DCM8D	290	625	170	1850	1500	522	275	242	78	AT

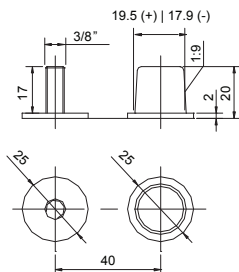
* Height from the bottom of the battery to the highest point of the terminal.

Terminals

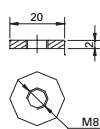
AM



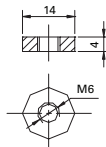
AT



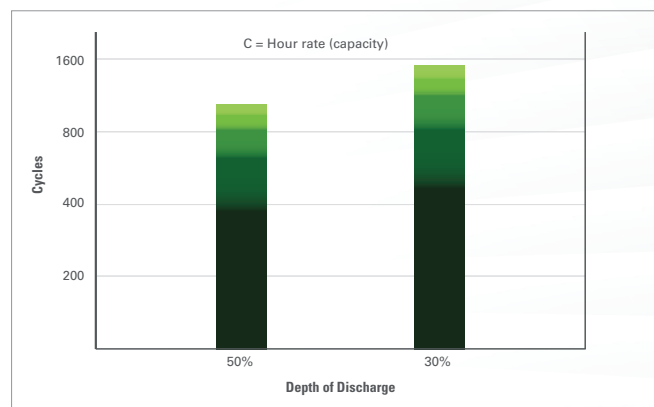
M8



M6



CYCLE LIFE IN RELATION TO DEPTH OF DISCHARGE (25°C)



- Classified non-spillable, non-hazardous and exempt from DOT hazardous materials regulations. 49 CFR 173.150(d) compliant.
- Approved for all modes of transportation.
- Certified to ISO, UL and CE quality standards.
- Complaint with IEC standards.



Distributed by: