

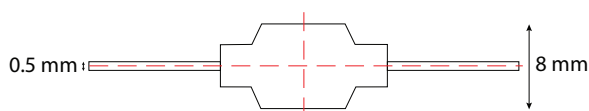
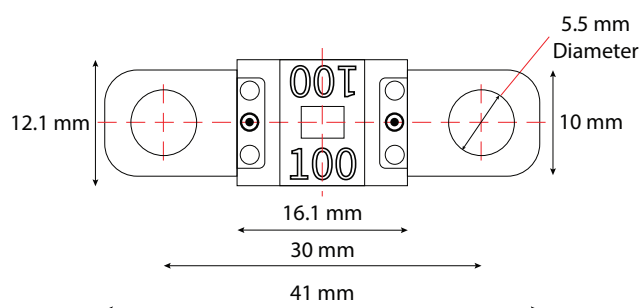
AMI 30A Midi Fuse 30A-80V

AMI030



Advance the security of your electrical system with Alvolta's AMI/ Midi fuses, designed specifically to offer overcurrent protection. Crafted from premium tin-plated copper terminals with a PA66+30GF (Polyamide/Nylon 66 with Glass Fibre Reinforcement) unit, these fuses are ideal for ensuring optimal circuit performance while preventing any short circuits and overloads in your 32V system. AMI/ Midi fuses offer a cost-effective, space-saving fuse option that is designed for high-current applications. Each fuse is designed to have a small footprint with a bolt-down design, making the fuses a standard circuit protection choice for automobiles and trucks. AMI/ Midi fuses are ideal for battery and alternator connections and other medium gauge cables requiring high current protection.

Product Dimensions



Product Properties

Voltage Rating	DC 58V or Less
Interrupting Rating	2000A at 58V DC
Operating Temperature	-40°C to +125°C
Typical Voltage Drop	110 mV
Mounting Torque	3.5-3.8 N.m
Housing Material	PA66+30GF (UL94-V0)
Terminal	Copper Alloy
Colour	Silver
Compliance	ISO 8820-5 / GB/T31465.5

Time-Current Characteristics

Test Current	Opening Time			
	30A~125A		150A~200A	
	Min.		Max.	
75%	-	-	100 hrs	-
100%	100 hrs	-	-	-
110%	4 hrs	-	-	-
150%	90 s	3600 s	-	-
200%	3 s	100 s	1 s	15 s
300%	0.3 s	3 s	-	-
350%	-	-	0.3 s	5 s
500%	0.1 s	1 s	-	-
600%	-	-	0.1 s	1 s

Suitable for:

