

USER MANUAL



Solar Panel Mounting Tin Roof Rack Kits



Components List

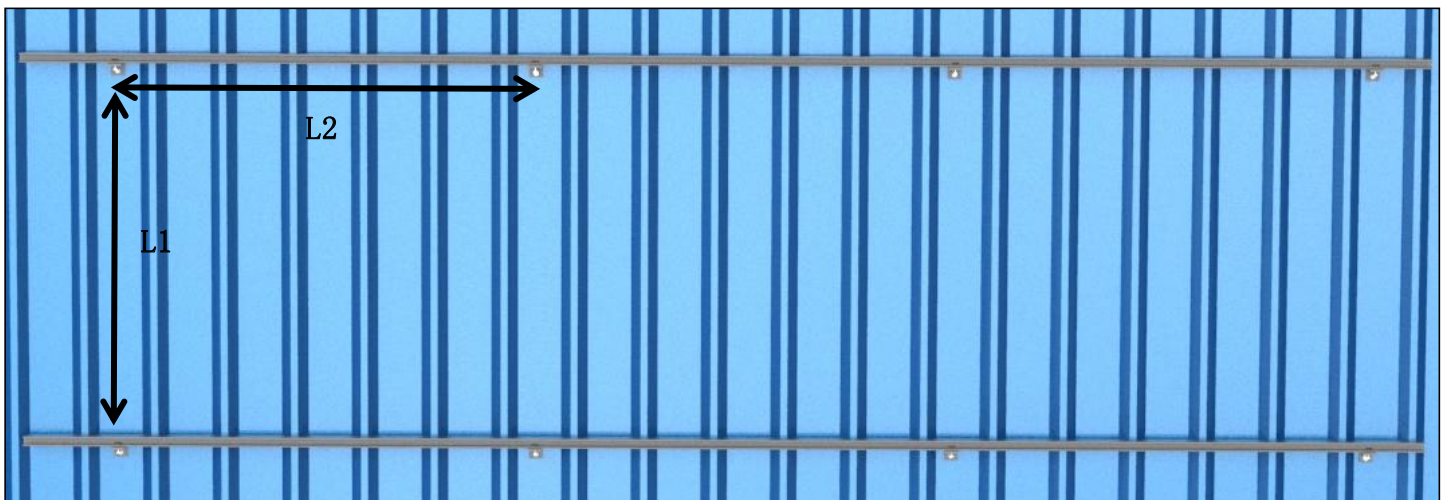
Model name	L Roof Clamp	Srew & Clamp	Tapping Screw	Rubber
Picture				

Model name	Rail	Splice	End Clamp	Mid Clamp
Picture				

Model name	Earthing clip	Earthing lug
Picture		

Installation Guide

Determine the position of the L roof clamps according to your design.

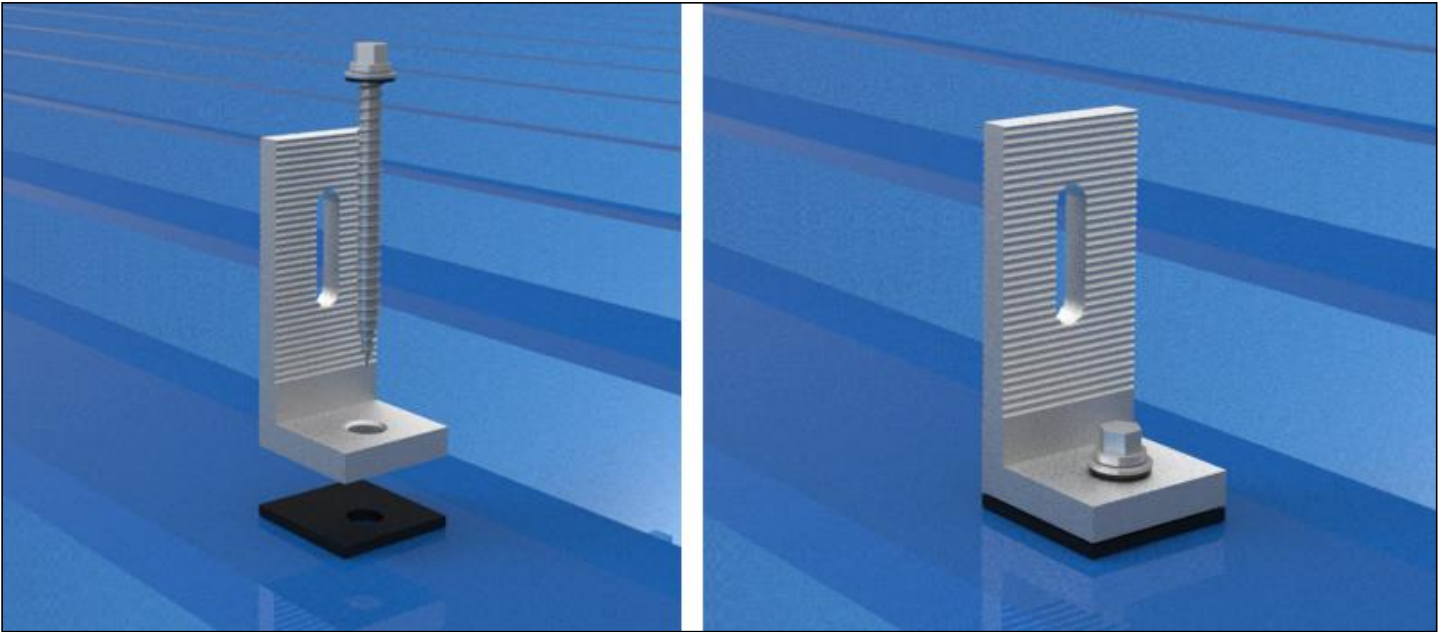


L1: Distance between rails is $0.6 \times \text{panel length}$.

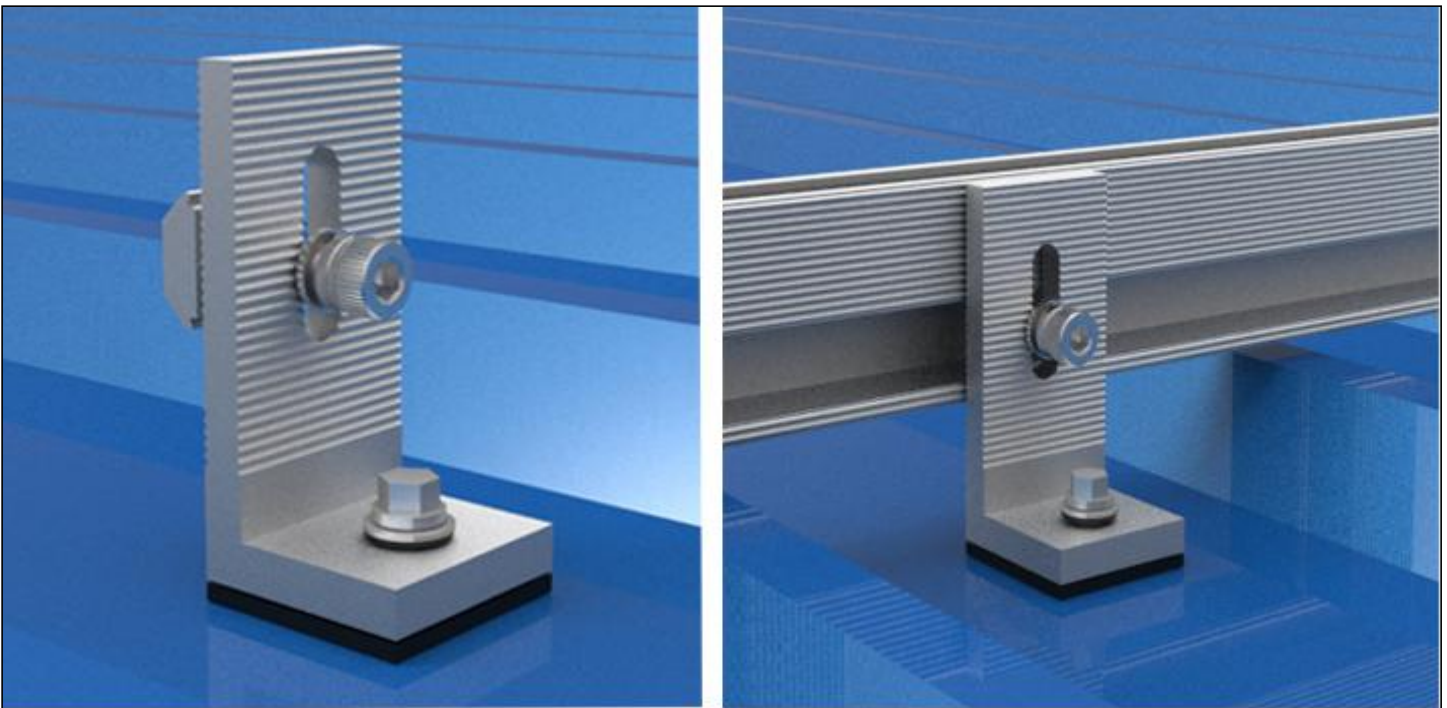
L2: Distance between roof clamps = 1200mm.

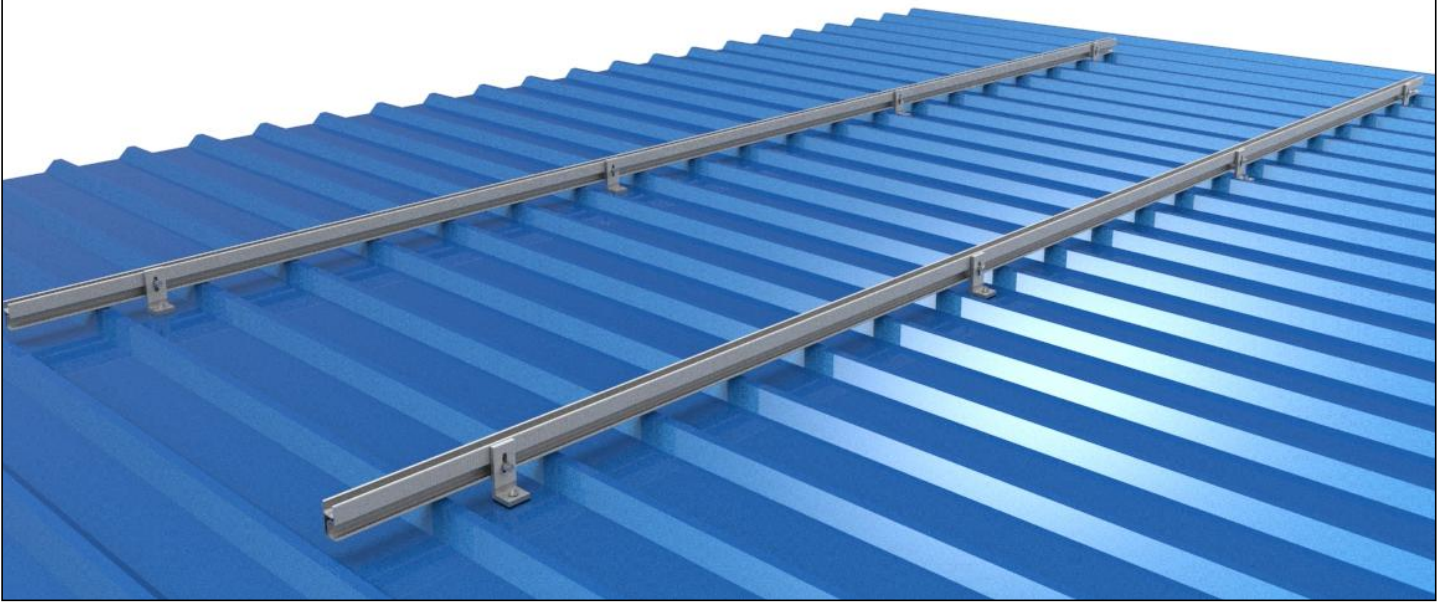
1. Install the roof clamp to the metal roof.

Fix the roof clamps with tapping screws and waterproof rubber.

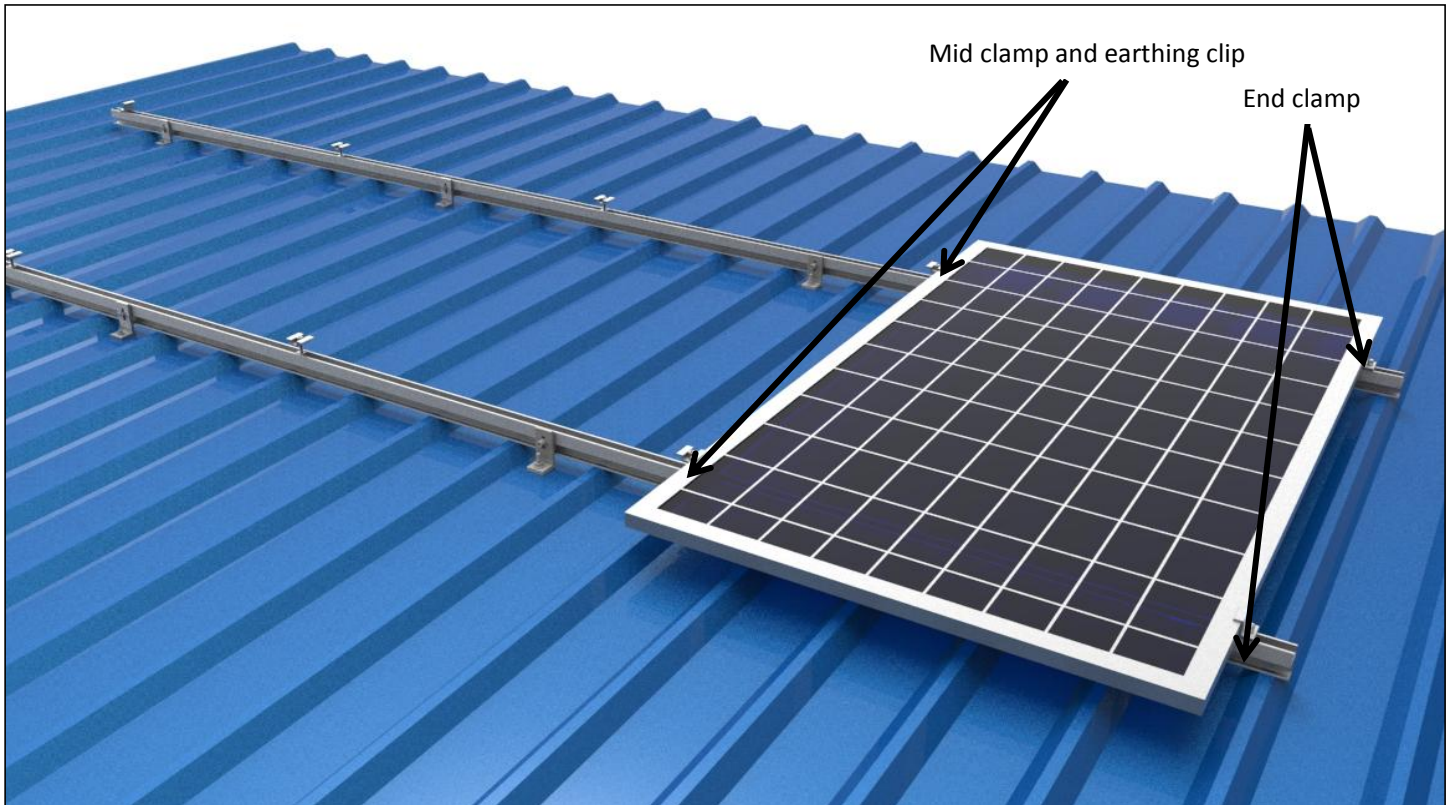


2. Install the rail on the L roof clamp with screw and clamp.

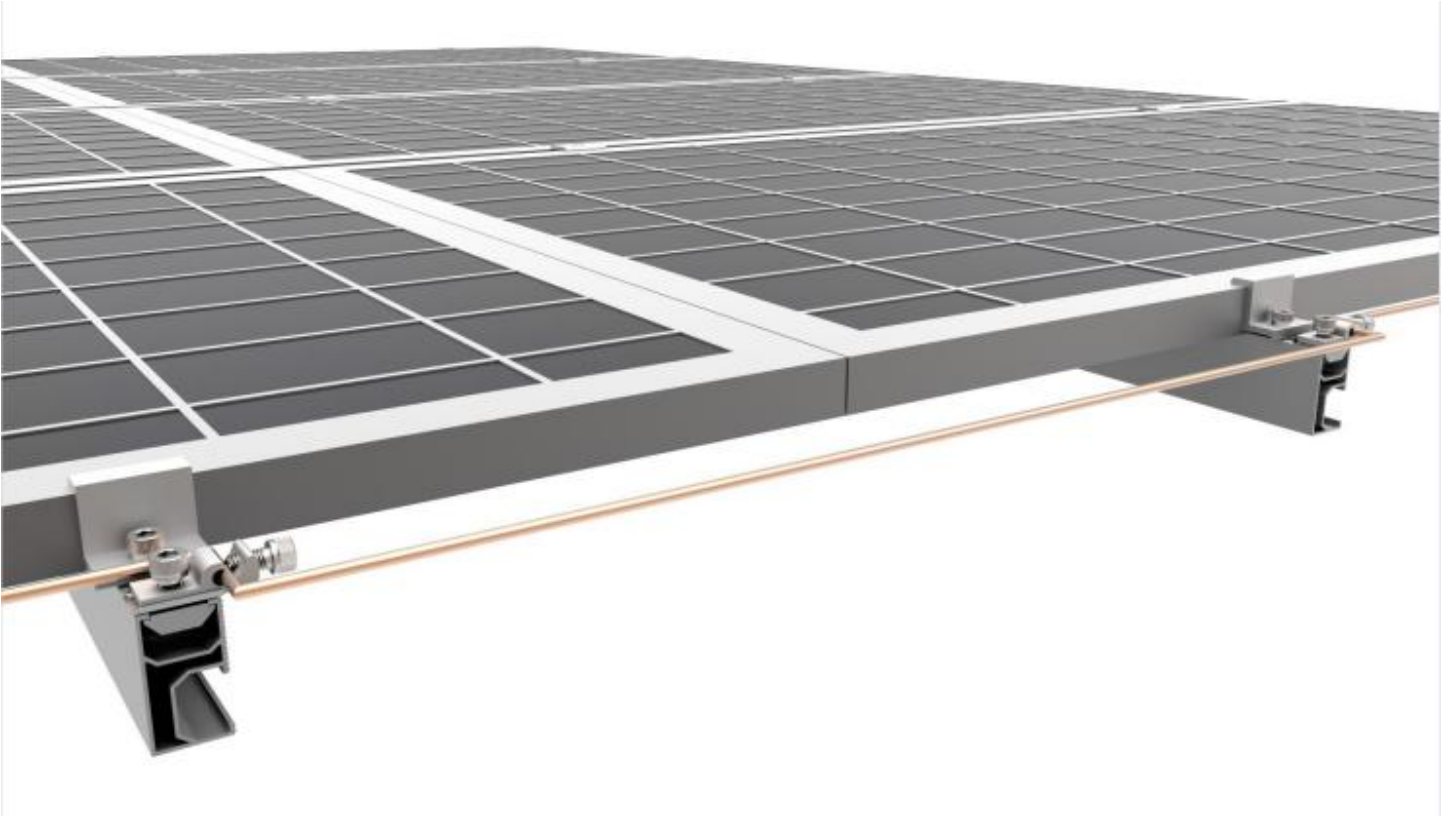




3. Place the first solar panel of the bottom row. Slide the end clamp tightly against the solar panel and fasten it. Fix the solar panel by the end clamp and mid clamp.



4. Install earthing lug.



5. Finished.



Installing two rails with the rail splice rail kit. The connection is finished. An expansion gap at the rail joints is suggested. Leave a little gap between two rails.

